

# EVB-LAN8187

## LAN8187(I) MII Customer Evaluation Board

+1.8V I/O VDDIO Operation

Schematic Revision B4

### Design Details

Board: PCB-7058AZ-B4

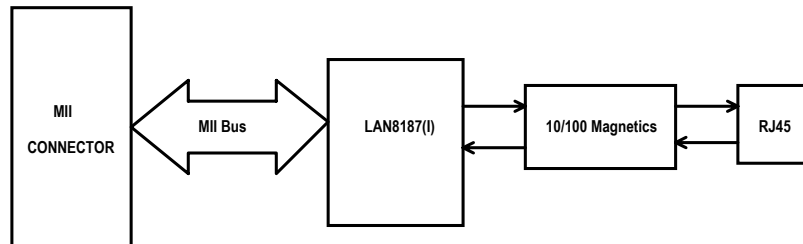
Chip: LAN8187(I)

Board Form Factor:

Assembly:

Circuit Diagrams utilizing SMSC Products Are Included As A Means Of Illustrating Typical Semiconductor Applications: Consequently Complete Information Sufficient For Construction Purposes Is Not Necessarily Given. The Information Has Been Carefully Checked And Is Believed To Be Entirely Reliable. However, No Responsibility Is Assumed For Inaccuracies. Furthermore, Such Information Does Not Convey To The Purchaser Of The Semiconductor Devices Described Any License Under The Patent Rights Of SMSC Or Others. SMSC Reserves The Right To Make Changes At Any Time In Order To Improve Design And Supply The Best Product Possible.

### EVB BLOCK DIAGRAM

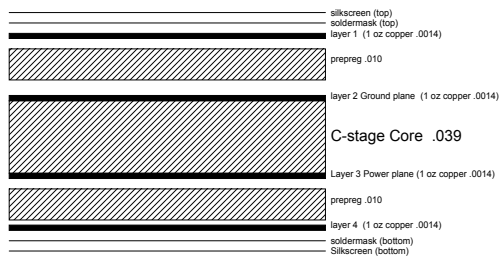


ITEM	Page
Title Page	1
Stackup	2
LAN8700(I) & Magnetics	3
Power & Misc	4

Revisions  
Rev B4 Public 11/2/06  
change center tap of magnetic to 75 ohms; corrected name on pin 1 to RMI1; moved nINT/TXER/TXD4 on symbol; added pullup to nINT; moved caps from page 4 to page 3.; removed 150ohm DNP R63 & R64; increased the 1000pF R45 capacitors to 2kV; added 10ohm series resistor to XTAL.



# stackup



- NOTES:
- BOARD FABRICATION AND QUALITY ACCEPTANCE PER IPC-6012 CLASS
  - BOARD MUST MEET OR EXCEED QUALIFICATION TESTING AND QUALITY CONFORMANCE TESTING INSPECTION SPECIFIED WITHIN
  - MATERIAL: NEMA GRADE STANDARD FR4 LAMINATED SHEET, HTE 1 OZ COPPER CLAD, TYPE GF/GFG WOVEN GLASS BASE, FLAME RESISTANCE MEETING UL94V-0 OR BETTER, MATERIAL IN ACCORDANCE WITH IPC-4101.
  - BOARD FABRICATION SHALL APPLY DATE CODE, FABRICATOR'S CAGE CODE, I.D. AND UL MARKING TO SECONDARY SIDE WHERE INDICATED. MARKING PREFERABLY COPPER ETCHED, EPOXY INK ACCEPTABLE.
  - SOLDERMASK USING TYPEB PHOTO IMAGEABLE LPI FILM 0.0015 THICK. APPLY TO BOTH SIDES IN ACCORDANCE WITH IPC-SM-840 (TYPE B CLASS 3). USE APPROPRIATE SOLDER MASK ARTWORK FOR EACH SIDE. PUNCTURING OF PUNCTURING OF TENTED HOLES IS PERMISSIBLE. SOLDERMASK MISREGISTRATION SHALL NOT EXCEED .004 INCH. SOLDERMASK OVERLAP PERMITTED ON CIRCULAR LANDS ONLY AND SHALL NOT EXCEED 0.001 INCH. NO OVERLAP PERMITTED ON RECTANGULAR LANDS.
  - FINISH: SOLDER MASK OVER BARE COPPER (SMOBC), HOT AIR LEVEL DEPOSIT
  - DRILL BOARDS USING DRILL DATA, DRILL PATTERN AND HOLE SCHEDULE. HOLE LOCATION MAY VARY WITHIN .004 IN. MAX ABOUT TRUE POSITION.
  - MINIMUM ANNULAR RINGS:  
.002 IN MINIMUM - EXTERNAL LAYERS.  
.001 IN MINIMUM - INTERNAL LAYERS.
  - ALL EXPOSED SURFACE LANDS AND LINES TO BE SOLDER COATED.
  - ALL HOLES ARE PLATED THROUGH UNLESS NOTED OTHERWISE. MINIMUM COPPER PLATING IN PLATED HOLES TO BE .001 IN. COPPER PLATING IN TENTED HOLES SHALL NOT PLUG HOLES WITHOUT PERMISSION FROM SMSC.
  - COMPONENT MARKINGS: SILKSCREEN BOTH SIDES USING NON-CONDUCTIVE WHITE EPOXY INK LANDS AND EXPOSED PLATED AREAS TO BE FREE OF INK.
  - DIMENSIONS ARE AFTER ETCHING AND PLATING AND ARE BASIC UNLESS OTHERWISE INDICATED.
  - BARE BOARD ELECTRICAL TEST: BARE BOARDS SHALL BE ELECTRICALLY TESTED USING CAD GENERATED NET LIST DATA. THIS INFORMATION TO BE SUPPLIED IN IPC-D-356 FORMAT. ELECTRICAL TESTING SHALL FOLLOW THE GUIDELINES ESTABLISHED BY IPC-ET-652. GUIDELINES AND REQUIREMENTS FOR ELECTRICAL TESTING OF PRINTED WIRING BOARDS.



Title <b>EVB-LAN8187_MII_BD_LV</b>		
Size C	Document Number <b>SCH-7058AZ</b>	Rev <b>B4</b>
Date: Wednesday, January 06, 2010	Sheet 2	of 4

Configuration Options  
 R61 Pullup to VDDIO on MDIO serial line.  
 Normally pulled high in the system by the MAC.

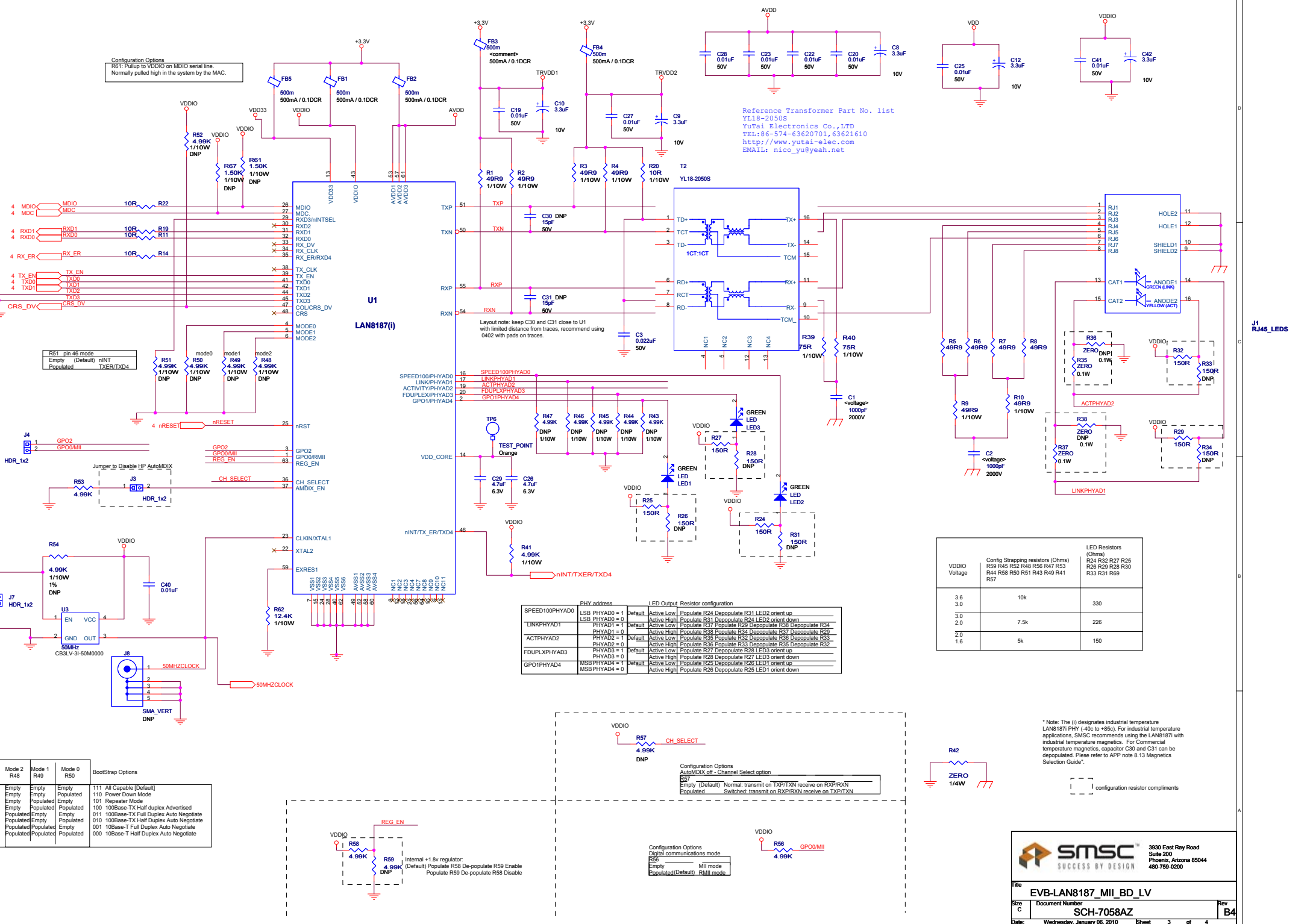
Reference Transformer Part No. list  
 YL18-2050S  
 Yutai Electronics Co., LTD  
 TEL:86-574-63620701,63621610  
 http://www.yutai-elec.com  
 EMAIL: nico\_yu@yeah.net

Layout note: keep C30 and C31 close to U1  
 with limited distance from traces, recommend using  
 0402 with pads on traces.

VDDIO Voltage	Config Strapping resistors (Ohms) R59 R45 R52 R46 R56 R47 R53 R44 R58 R52 R51 R43 R40 R41	LED Resistors (Ohms) R24 R32 R27 R25 R26 R29 R28 R30 R33 R31 R59
3.6	10k	330
3.0		
3.0	7.5k	226
2.0		
1.6	5k	150

PHY address	LED Output	Resistor configuration
SPEED100PHYAD0	LSB PHYAD0 = 1 LSB PHYAD0 = 0	Default: Populate R24 Depopulate R31 LED2 orient up Active Low: Populate R24 Depopulate R24 LED2 orient down
LINKPHYAD1	PHYAD1 = 1 PHYAD1 = 0	Default: Populate R37 Depopulate R38 Depopulate R34 Active High: Populate R39 Populate R34 Depopulate R37 Depopulate R29
ACTPHYAD2	PHYAD2 = 1 PHYAD2 = 0	Default: Populate R35 Populate R32 Depopulate R36 Depopulate R33 Active Low: Populate R36 Populate R33 Depopulate R35 Depopulate R32
FDUPLXPHYAD3	PHYAD3 = 1 PHYAD3 = 0	Default: Populate R27 Depopulate R28 LED3 orient up Active High: Populate R28 Depopulate R27 LED3 orient down
GPO1PHYAD4	MSB PHYAD4 = 1 MSB PHYAD4 = 0	Default: Populate R25 Depopulate R26 LED1 orient up Active High: Populate R26 Depopulate R25 LED1 orient down

\* Note: The (I) designates industrial temperature  
 LAN8187 PHY (-40c to +85c). For industrial temperature  
 applications, SMSC recommends using the LAN8187 with  
 industrial temperature magnetics. For Commercial  
 temperature magnetics, capacitor C30 and C31 can be  
 depopulated. Please refer to APP note 8.13 Magnetics  
 Selection Guide\*.



Mode 2 R46	Mode 1 R49	Mode 0 R50	BootStrap Options
Empty	Empty	Empty	111 All Capable (Default)
Empty	Empty	Populated	110 Power Down Mode
Empty	Populated	Empty	101 Repeater Mode
Empty	Populated	Populated	100 100Base-TX Half Duplex Advertised
Populated	Empty	Empty	011 100Base-TX Full Duplex Auto Negotiate
Populated	Populated	Empty	010 100Base-TX Half Duplex Auto Negotiate
Populated	Populated	Empty	001 10Base-T Full Duplex Auto Negotiate
Populated	Populated	Populated	000 10Base-T Half Duplex Auto Negotiate

Configuration Options  
 AutoMDIX off - Channel Select option  
 R57 Empty (Default) Normal transmit on TXP/TXN receive on RXP/RXN  
 Populated Switched transmit on RXP/RXN receive on TXP/TXN

Configuration Options  
 Digital communications mode  
 R55 Empty Mill mode  
 Populated(Default) RMI mode

Internal +1.8v regulator:  
 (Default) Populate R58 De-populate R59 Enable  
 Populate R59 De-populate R58 Disable



