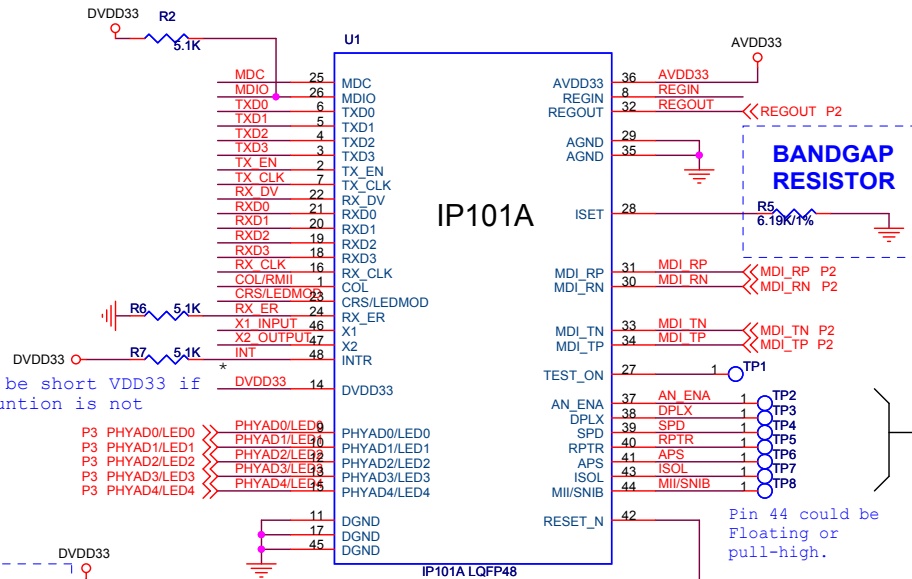


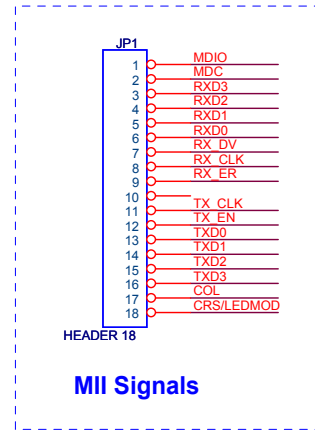
**** Bead should be placed as close to IP101A as possible and in the same side as IP101A.**

* : Optional ,but recommended



Pin48 could be short VDD33 if interrupt funtion is not used.

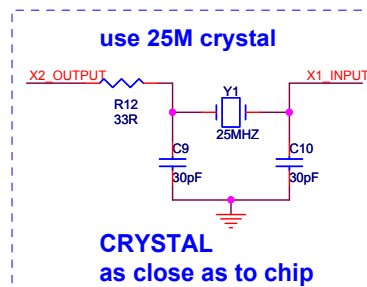
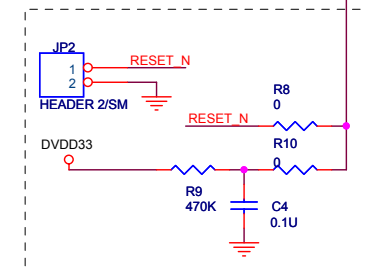
Pin 44 could be Floating or pull-high.



Default setting

Hardwire Configuration network:

1. This configuration shows Enable: Auto negotiation, Full duplex, 100Mbps, Link Down Power Saving, MII interface Disable: Isolate, Repeater mode
2. These seven configuration pins could be connected to VDD or GND directly.



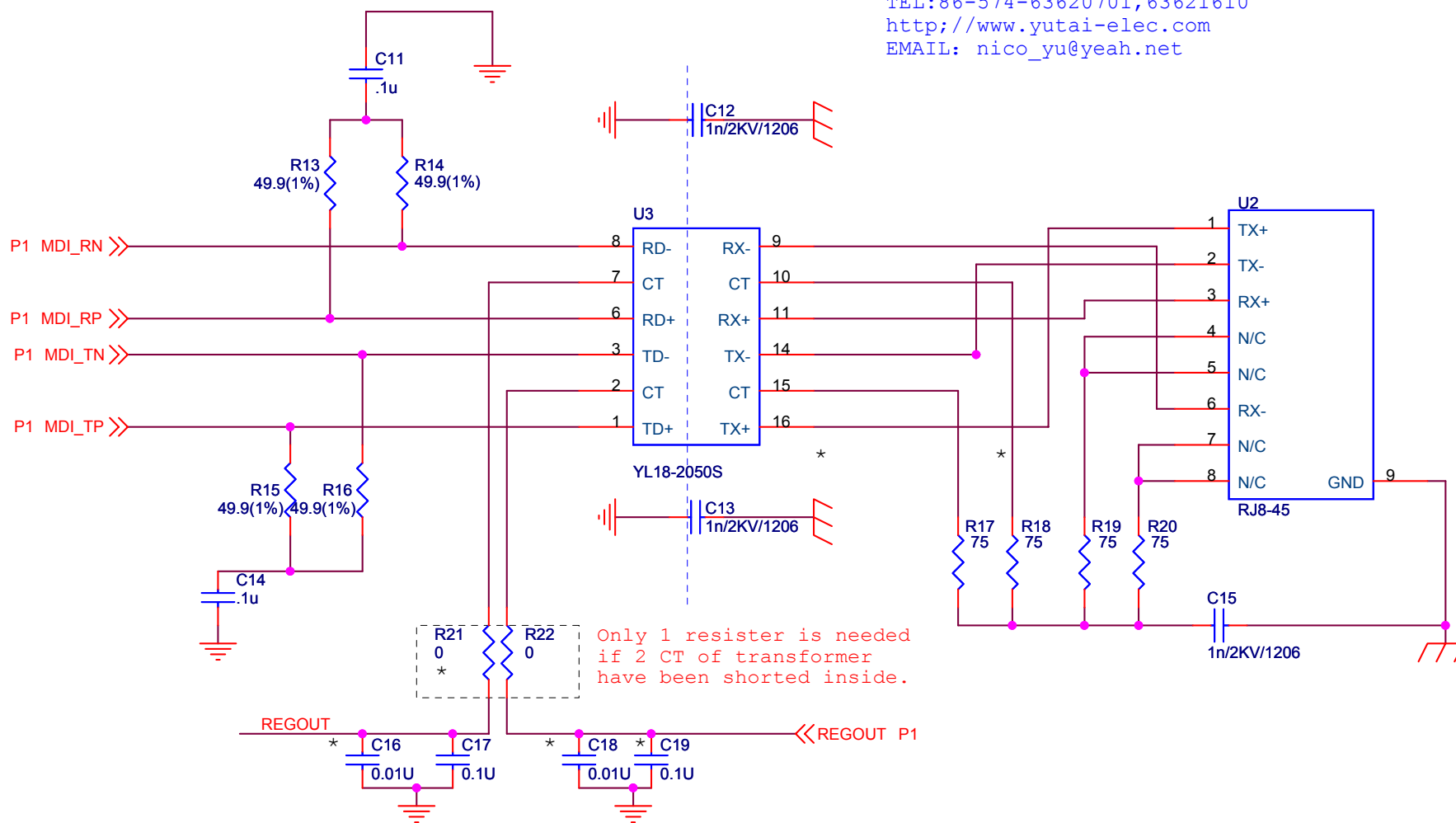
IC+
IC Plus Semiconductor Corporation

Title: **IP101A Chip Circuit Diagram**

Size B	Document Number	Rev
	MII UTP	

Date: Wednesday, April 06, 2011 Sheet 1 of 3

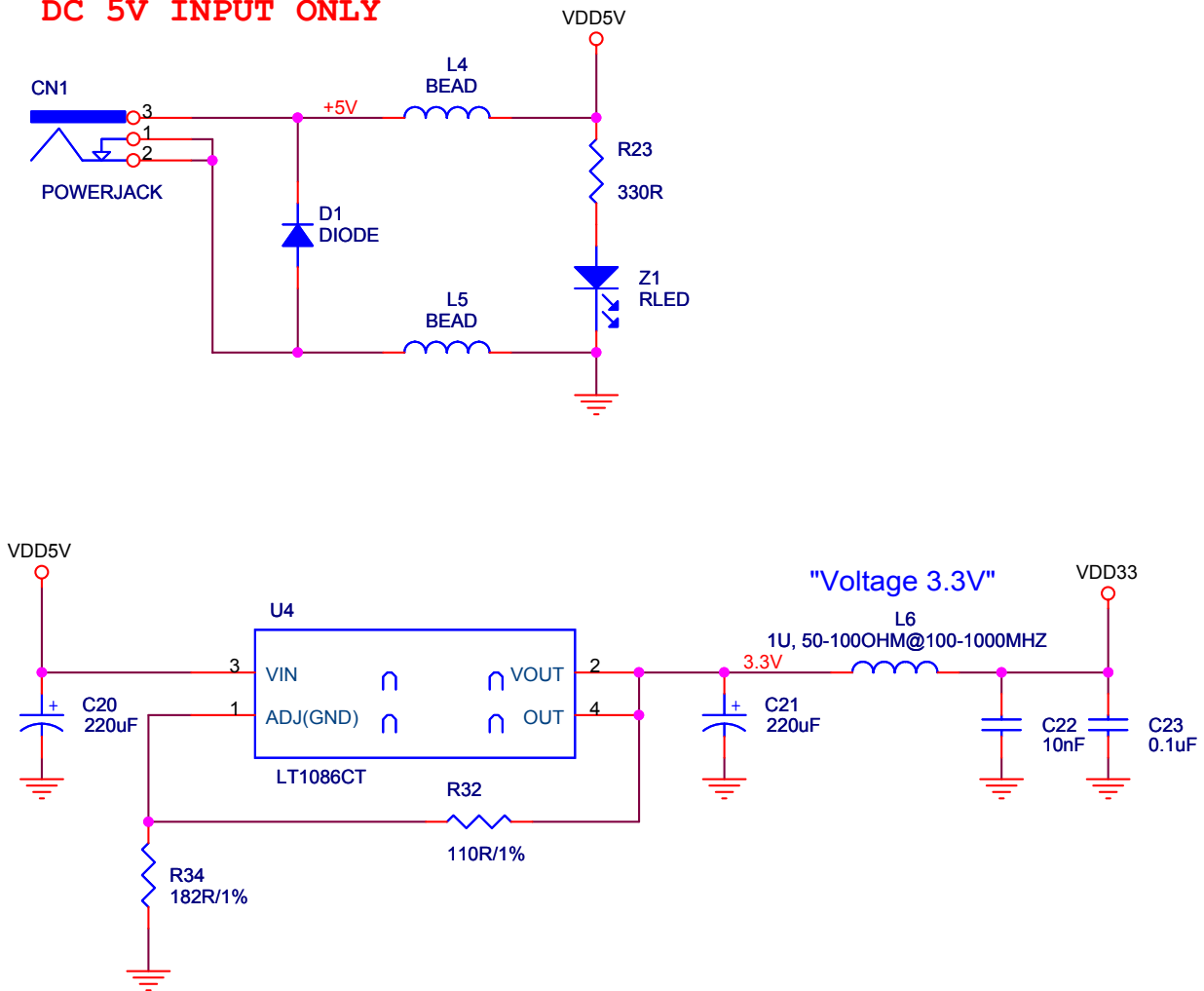
Reference Transformer Part No. list
 YL18-2050S
 YuTai Electronics Co.,LTD
 TEL:86-574-63620701,63621610
<http://www.yutai-elec.com>
 EMAIL: nico_yu@yeah.net



IC Plus Semiconductor Corporation

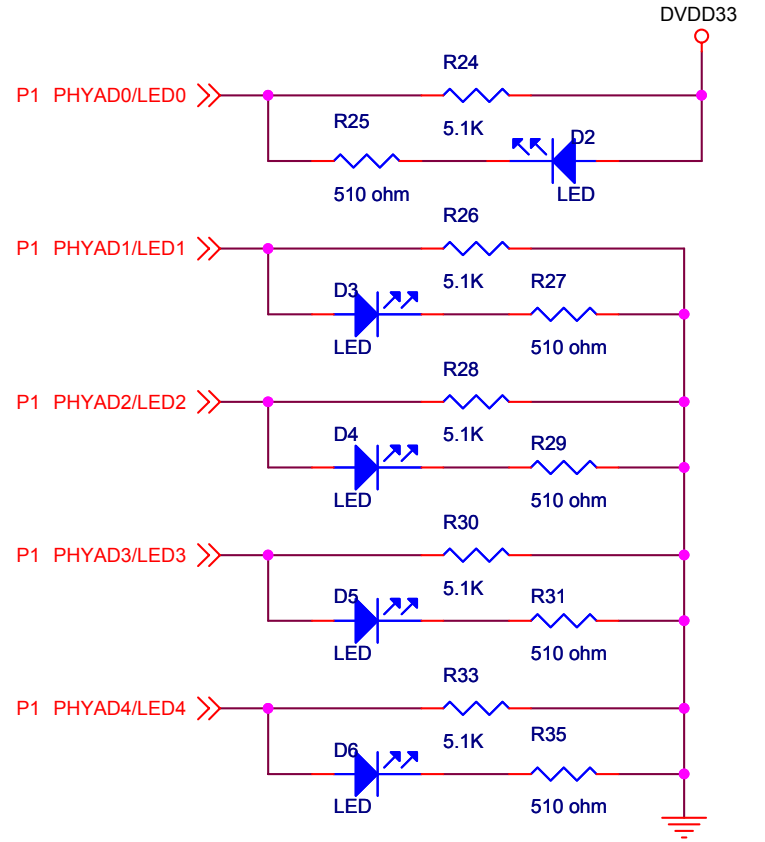
Title		
IP101A Chip Circuit Diagram		
Size A	Document Number MII UTP	Rev
Date: Wednesday, April 06, 2011	Sheet 2 of 3	

DC 5V INPUT ONLY



LED and PHY address Configuration

This schematic sets PHY address to 00001b.



LED0	LED1	LED2	LED3	LED4
Link	Dupx	10Act	100Act	COL



IC Plus Semiconductor Corporation

Title		
IP101A Chip Circuit Diagram		
Size	Document Number	Rev
A	MII UTP	
Date:	Wednesday, April 06, 2011	Sheet 3 of 3