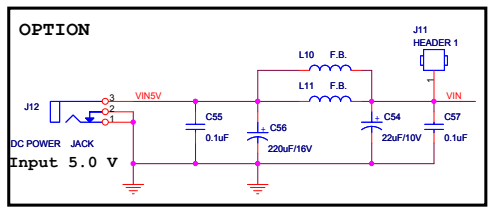
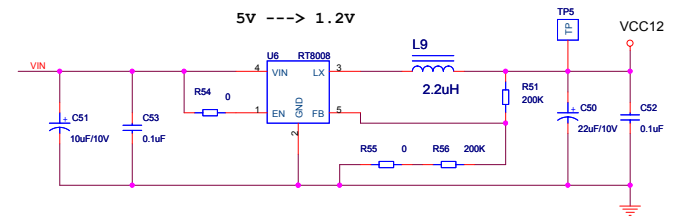
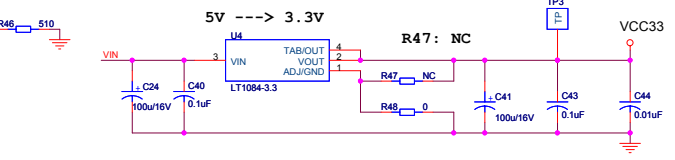
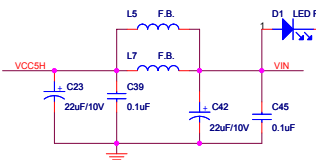
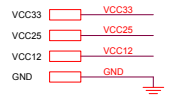
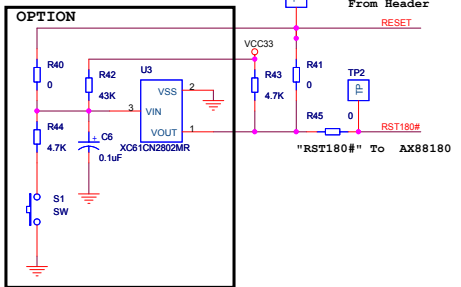
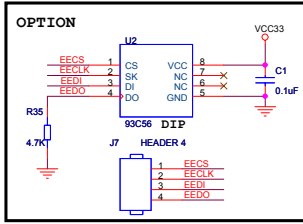
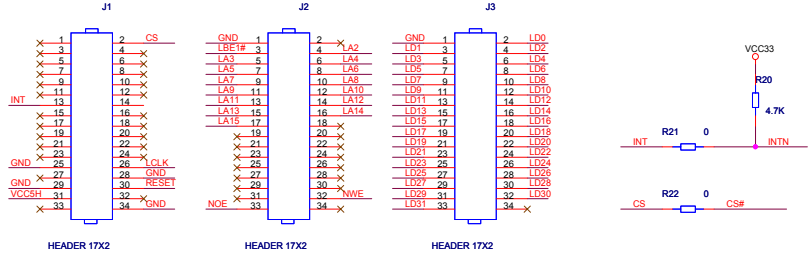


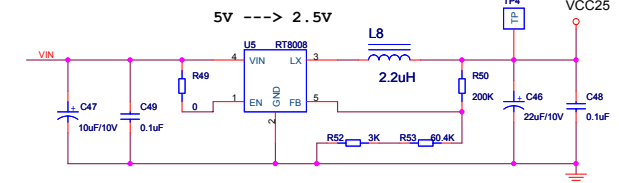
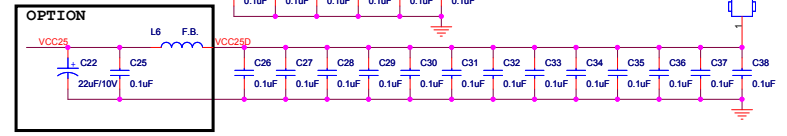
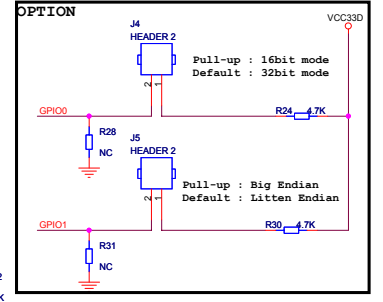
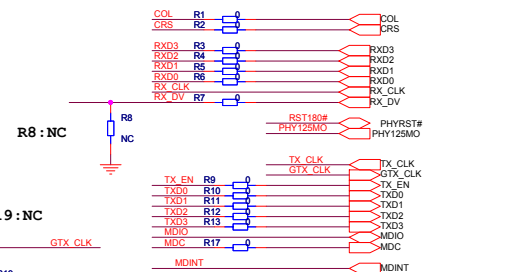
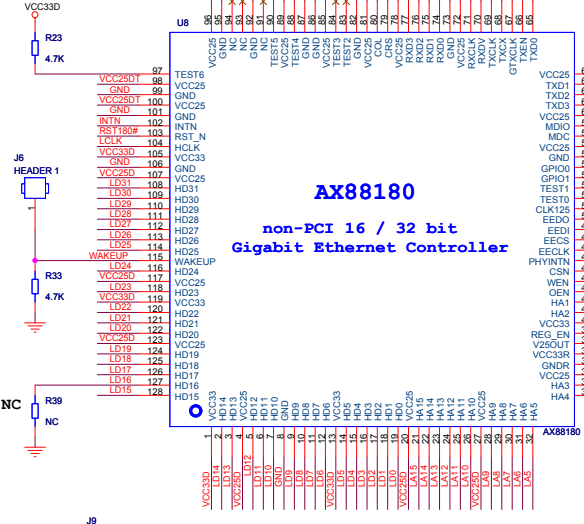
2X17 HEADER PIN

ASIX ELECTRONICS CORPORATION		
Title		
AX88180 DEMO BOARD FOR S3C2440		
Size	Document Number	Rev
A	Placement	2.2
Date:	Tuesday, December 21, 2010	Sheet 1 of 4

S3C2440 CONNECTOR



AX88180
non-PCI 16 / 32 bit
Gigabit Ethernet Controller



AX88180 DEMO BOARD FOR S3C2440
32 Bit Mode
Little Endian

ASIX ELECTRONICS CORPORATION			
Title AX88180 DEMO BOARD FOR S3C2440			
Size C	Document Number AX88180	Rev 2.2	
Date:	Monday, December 20, 2010	Sheet	2 of 4

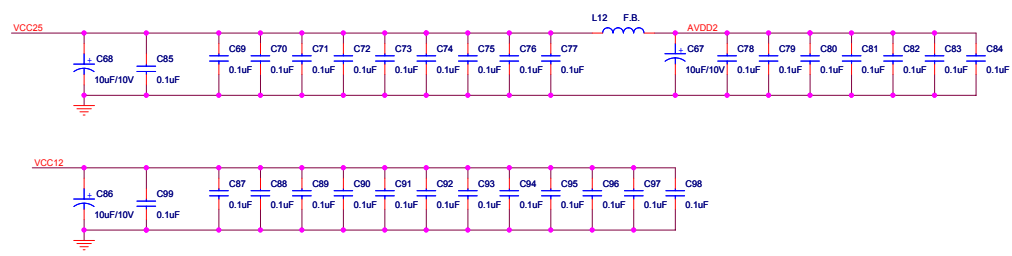
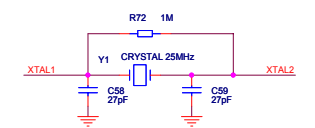
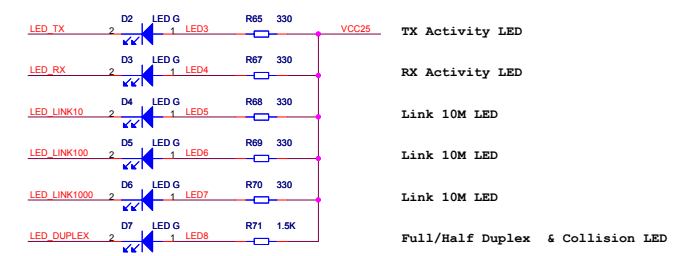
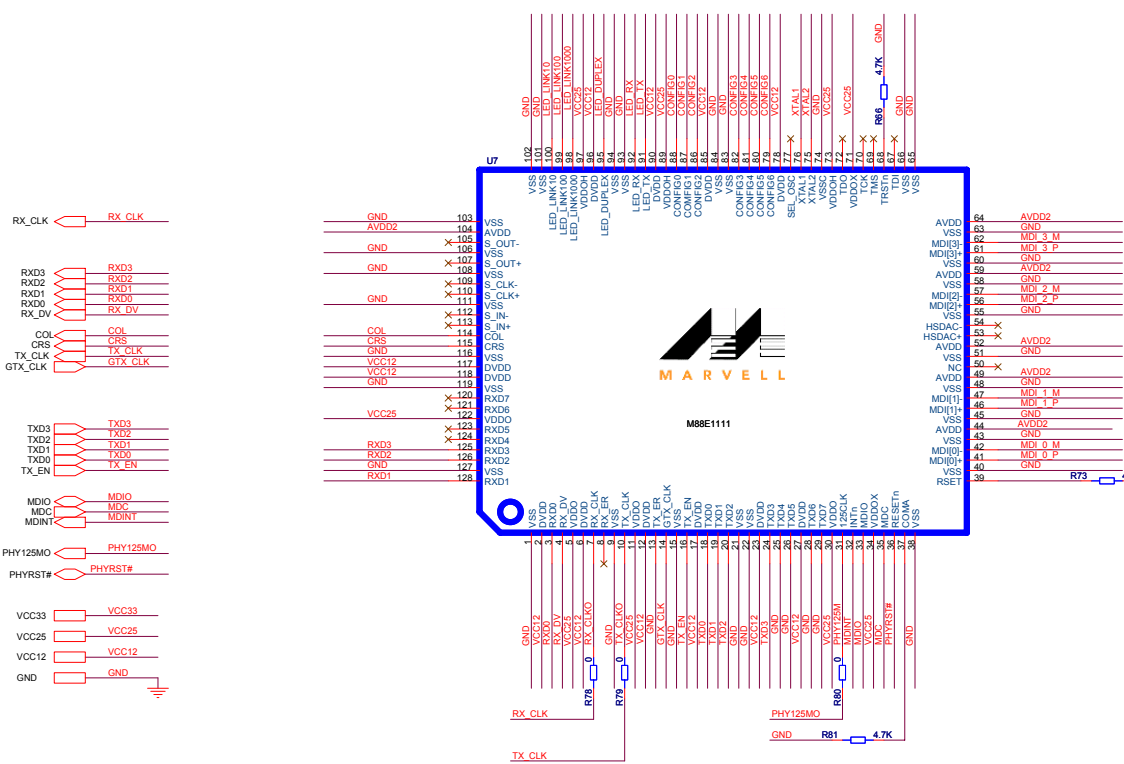
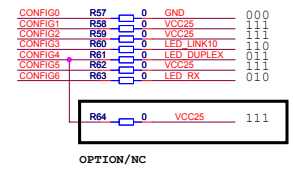
Pin To Constant Mapping

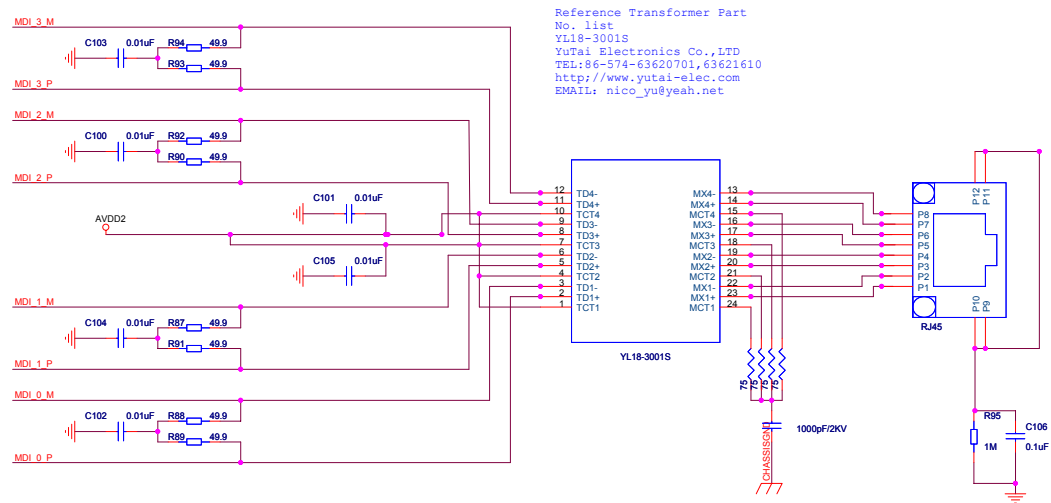
PIN	BIT[2:0]
VDDO	111
LED_LINK10	110
LED_LINK100	101
LED_LINK1000	100
LED_DUPLEX	011
LED_RX	010
LED_TX	001
VSS	000

Pin To Configuration Register Mapping

PIN	BIT [2]	BIT [1]	BIT [0]
CONFIG0	PHYADR[2]	PHYADR[1]	PHYADR[0]
CONFIG1	ENA_PAUSE	PHYADR[4]	PHYADR[3]
CONFIG2	ANEG[3]	ANEG[2]	ANEG[1]
CONFIG3	ANEG[0]	ENA_XC	DIS_125
CONFIG4	MODE[2]	MODE[1]	MODE[0]
CONFIG5	DIS_FC	DIS_SLEEP	MODE[3]
CONFIG6	SEL_BDT	INT_POL	75/50 OHM

PHY ADDR:11000==>18
 MODE[3:0] :1011=RGMII to copper
 1111=GMII to copper





History:
 V2.2 : 2007/04/20
 AX88180 PIN90 NC Change to TEST5
 AX88180 PIN91 TEST5 Change to NC